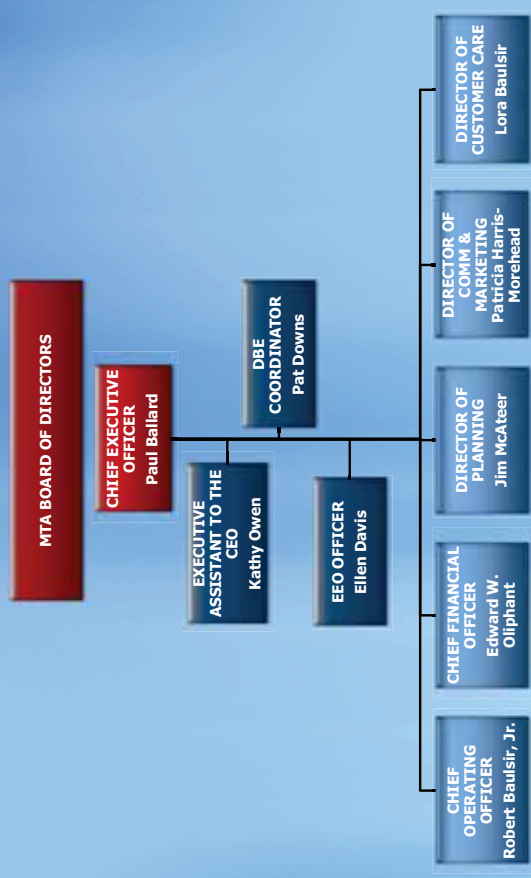




# MTA Organization Chart



## Presentation to *Oklahoma City Council*



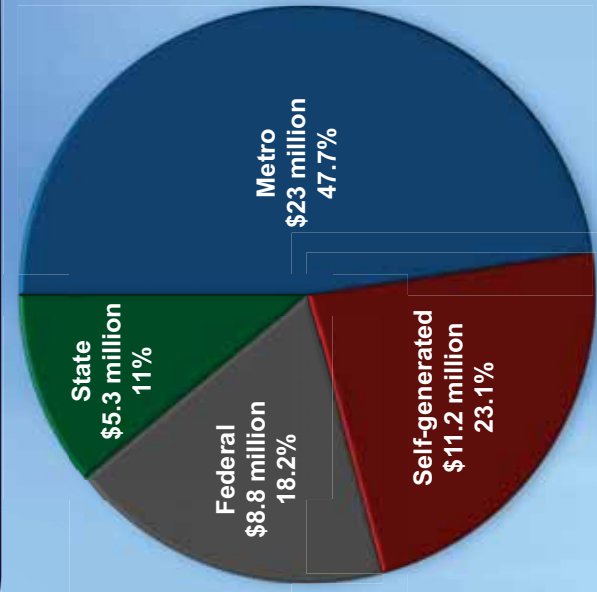
## *Public Transit: A Brand New Way to Ride*

Presented by  
**Paul J. Ballard, Chief Executive Officer**  
 Nashville Metropolitan Transit Authority and Regional Transportation Authority  
 June 22, 2010

## Nashville MTA Service Area

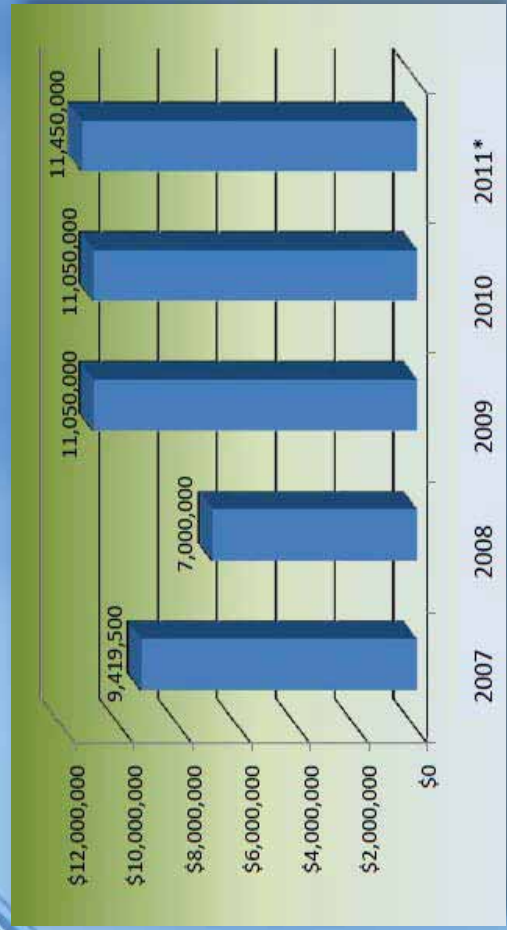


## How MTA is Funded



Note: A small portion of the Federal funds are provided through Metro's Capital Budget as matching funds to MTA's Federal Grants.

## Metro Capital Contributions



\* Requested for  
FY 2011

## Regional Transportation Authority

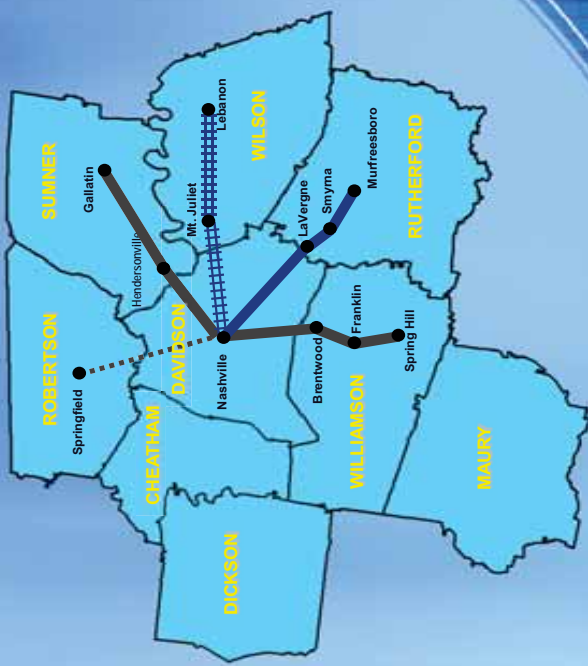


- MTA management team became RTA's team on December 1, 2008
- Board of Directors (31): City/County Mayors, TDOT Commissioner, and 6 Governor's Appointees
- Created by state statute in 1988 and serves a 9-county area
- Services include buses, van pool, car pool and Music City Star





# Regional Transportation Services

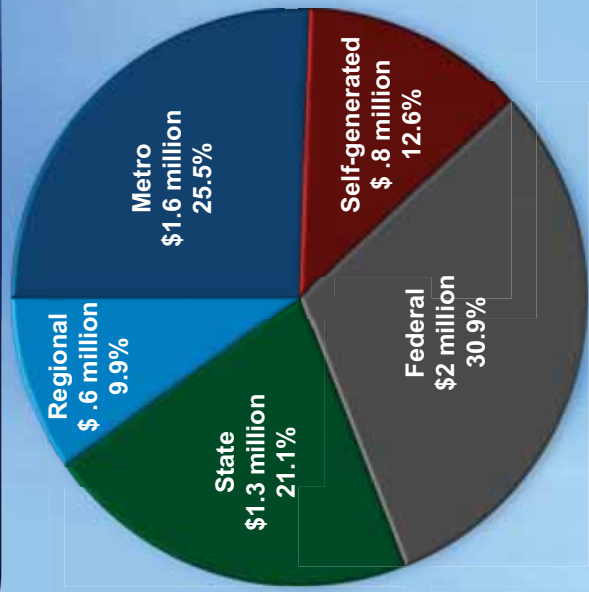


### KEY

- - - - - - Proposed for Fall 2010
- - - - - - R&R Express Bus Service contracted between RTA and Grayline
- - - - - - R&R Express Bus Service contracted between RTA and MTA
- ##### Regional Rail Service contracted between RTA and TSG



# How RTA is Funded



**FY 2011**  
Total \$6.3 million

Note: A small portion of the Federal funds are provided as Capital matching funds to RTA's Federal Grants from the State and Metro Government.





# MTA Ridership

## Fiscal Years 2002 – 2009

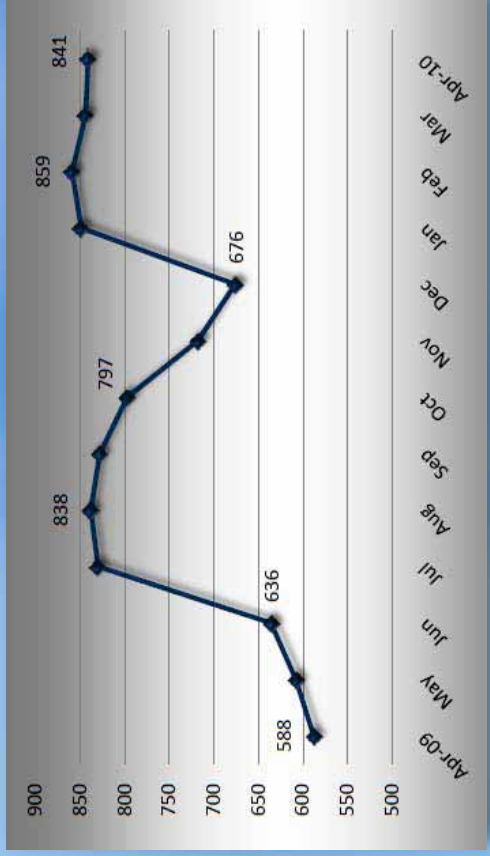


Ridership



# Music City Star Ridership

## Average Daily Ridership April 2009 – April 2010



## MCS Capital/Construction Costs



- **\$40.9 million:**
  - track improvements
  - station construction
  - crossing upgrades
  - bridge replacement
  - final design
  - administration
  - contingencies

## New Buses: NABI Hybrid



- Six new 60-foot hybrid articulated buses purchased for new BRT service
- Two more 60-foot hybrid articulated buses are on order
- Two 40-foot hybrid buses are on order



- Low floor and wider aisles
- Larger capacity for more passengers
- Alternate fuel system (diesel-electric)

## Other Buses: Gilligs



- Low floors
- Fully accessible
- Superior HVAC
- Automatic stop announcements
- Bike racks
- 100 new buses since 2004
- More fuel efficient (emits 60-80% fewer emissions)

## EasyRide Partnerships

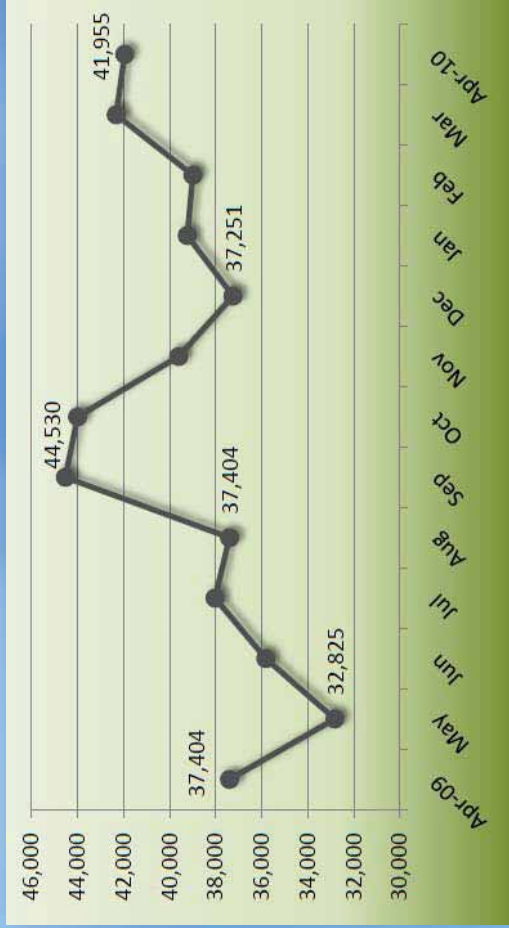
### Vanderbilt University

- Provides transportation services to faculty and staff as an employee benefit
- Staff swipe their magnetic-stripped ID badges through the fare boxes for trips to and from work
- Information recorded by fare boxes and university is billed each month
- 41,955 trips in April 2010



## EasyRide Partnerships

### Vanderbilt EasyRidership April 2009 – April 2010



## EasyRide Partnerships

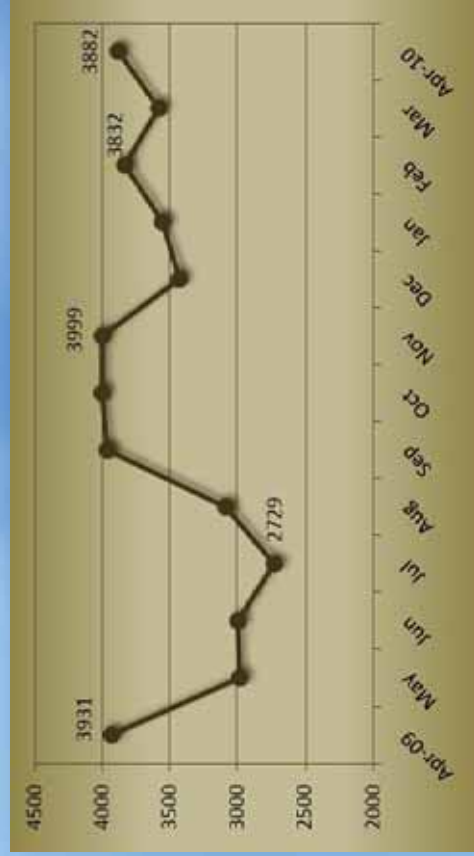
### Belmont University

- Entered into a contractual agreement in August 2005
- Provide transportation services to faculty, staff and students
- Use Belmont employee and student ID cards
- Information recorded by fare boxes and university is billed each month
- 3,882 trips in April 2010



## EasyRide Partnerships

**Belmont EasyRidership**  
April 2009 – April 2010



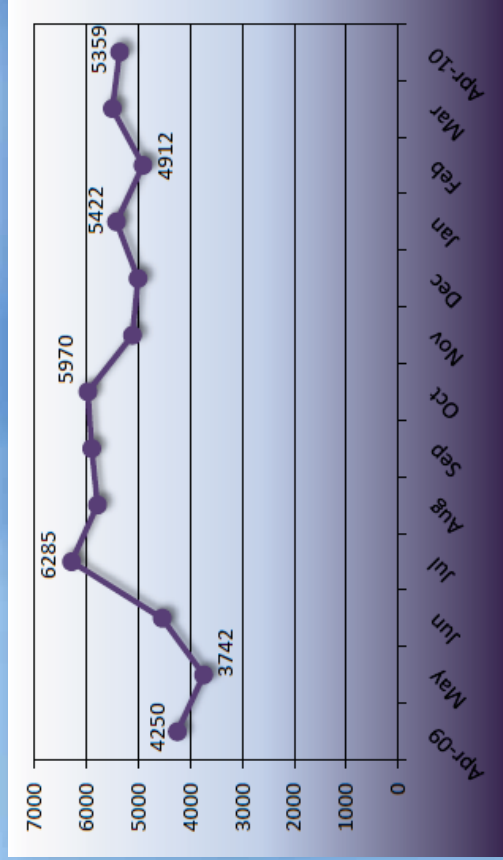
## EasyRide Partnerships

**State EasyRidership**  
April 2009 – April 2010



## EasyRide Partnerships

**Metro EasyRidership  
April 2009 – April 2010**



## AccessRide

- Provides door-to-door paratransit service within Davidson County 1.5 miles from a regular bus route, excluding commuter or express service
- Publicly funded paratransit service which operates specialized van services for people with disabilities who are unable to use regular fixed-route buses



## AccessRide Fares

- Standard paratransit fare is \$3.20 per one-way trip
- Passengers may travel with a Personal Care Attendant (PCA) at no additional charge
- Fare for a guest is \$3.20 per one-way trip for this paratransit service
- Passengers may travel with a service animal at no additional charge (inform the reservationist when traveling with a service animal)



## AccessRide

### Average Passenger Trips per Month



## Music City Circuit

Introduced to Nashville downtown workers, residents and visitors on March 29, 2010



## BusLink

On-Demand Response Zone

**It's as easy as 1, 2, 3 ...**

- 1** Call 862-LINK 882-5445
- 2** Walk to the BusLink stop
- 3** Catch a ride

**Effective March 28, 2010**  
On-demand service for the Madison area

## Bus Rapid Transit (BRT)



- Service began September 27, 2009 on Gallatin Road
- BRT is basically "Light Rail with Buses"
- Fewer stops resulting in shorter trips
- Very flexible system implemented in phases

## Bus Rapid Transit (BRT)



- New shelters with info kiosks, bike racks and container for litter
- Electronic arrival signs
- Solar security strobe lighting
- Green light extenders on buses



## Music City Central

Up to 20,000 people travel through Music City Central each weekday.

- New transit station opened October 2008
- More than 434,000 square feet
- Located at 400 Charlotte Avenue between 4<sup>th</sup> and 5<sup>th</sup> Avenues North in the Central Business District



## Mayors Caucus

The Middle Tennessee Mayors Caucus was formed July 22, 2009 and provides leadership on important issues facing the ten county region.

- Provides opportunity for mayors to brainstorm on possible solutions to problems shared by communities across the region without the constraints of a formal organization
- Augments already established regional organizations like the Metropolitan Planning Organization, the Greater Nashville Regional Council, and the Regional Transportation Authority and provides leadership to those organizations
- Allows local governments to establish a unified voice that represents to state and federal legislators the common interests of the region
- Provides a forum for regional dialogue between the public and private sectors and works by consensus, giving an equal voice to all mayors throughout the region, regardless of the size of their community (policy positions taken by the Caucus represent true regional consensus)



## Transit Alliance

The Transit Alliance of Middle Tennessee is a non-profit organization with the mission of encouraging private sector as well as public sector support for new investments in mass transit in the ten county region of Middle Tennessee.

The Transit Alliance of Middle Tennessee is committed to communicating the value of regional mass transportation needs and options. The Alliance fosters education across the region about the economic value of mass transit investments. Through these communication and education efforts, the Alliance will actively participate in the steps necessary to secure dedicated revenues for mass transit investments in the months and years ahead.



## Music City Star



# Music City Star



# RTA Vanpools



## MTA Hybrid



34

## RTA Hybrid



33



# MTA Hybrid – Music City Circuit

